



Pink Alphabet

Design size width of the letter x 14 DOTZ® (1.6in)

Skill Level Beginner

Crafting Time Under 1 Hour

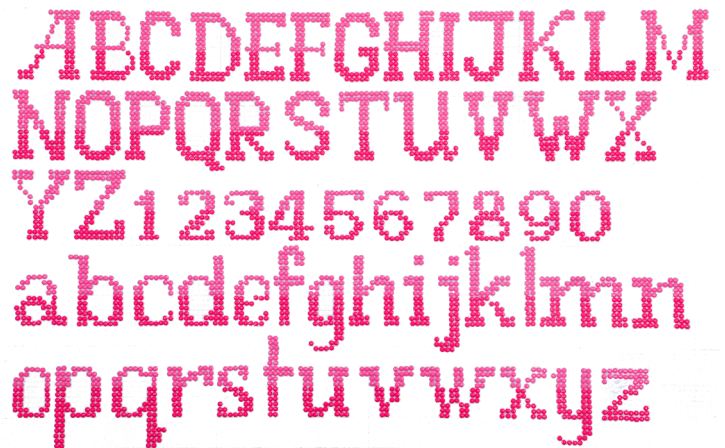
Supplies & Tools

- DOTZ® Sandwich Adhesive Roll
- DOTZ® Stylus, Wax and Craft Tray
- Gift tag or any item you want to decorate
- DOTZ® LitePad
- Scissors
- DIAMOND DOTZ®
Light Cyclamen 8065
Mid Cyclamen 8066



Directions

- Cut out a piece of Sandwich Adhesive in the size of your design. Refer to alphabet chart to plan your layout.
- Lay the Chart (design facing up) on your DOTZ® Lite surface and position the Sandwich Adhesive piece (paper side down) over the top of the Chart.
- Peel back the clear surface from the top of the Sandwich Adhesive to reveal the sticky surface. You may want to peel back to reveal the sticky surface gradually as you dot.
- Dot onto the sticky surface following the chart pattern. Make sure to recover the sticky surface with some protective film in between dotting sessions.
- Once all dotting is finished, cut evenly around the edge of the dotted design leaving the width of 1 gem around the outside of the design.
- Peel the backing paper away from one small corner of the underside of your project and secure the small sticky area onto your final surface.
- Once secured in one corner, gently peel the remaining backing paper away, sticking your dotted design down as you go.



Tips

Start at the top dot on the very right side row and fill the right side vertical row first.

Once your design is secured on the final surface, place the protective film over the DOTZ® and roll over firmly with a rolling pin.

For best results use DOTZ® Sandwich Adhesive on smooth, clean, and dry surfaces. Not suitable for use on fabrics or uneven surfaces.



Your Design! Your Way!

©2020 Needleart World (Hong Kong) Ltd. All rights reserved





Alphabet Chart

Color Palette

- Light Cyclamen 8065
- Mid Cyclamen 8066



1in



Alphabet Chart

Color Palette

- Light Cyclamen 8065
- Mid Cyclamen 8066



1in